



J. Bonfill & Associates

J. Bonfill & Associates, Inc.  
Registered Architects AA C002050  
9360 S.W. 72nd Street Suite 265  
Miami, Florida 33173 (305) 598-8383  
Jacqueline Bonfill Gee AR0013685

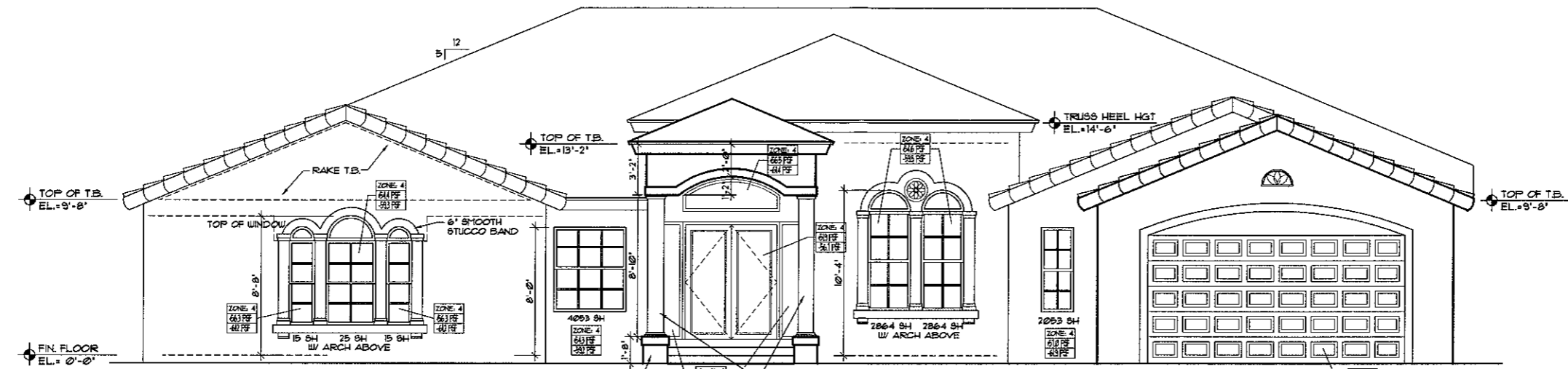
OAKRIDGE NORTH  
MODEL A  
Lot 19 Block 4 Miami, Florida  
Owner: Gilco Homes, Inc.  
Miami, FL (305) 598-9431

ALL DRAWINGS AND WRITTEN MATERIAL APPEARING HEREIN CONSTITUTE THE ORIGINAL AND UNPUBLISHED WORK OF J. BONFILL & ASSOCIATES, INC., AND MAY NOT BE DUPLICATED, USED OR DISCLOSED WITHOUT THE EXPRESS WRITTEN CONSENT OF J. BONFILL & ASSOCIATES, INC.

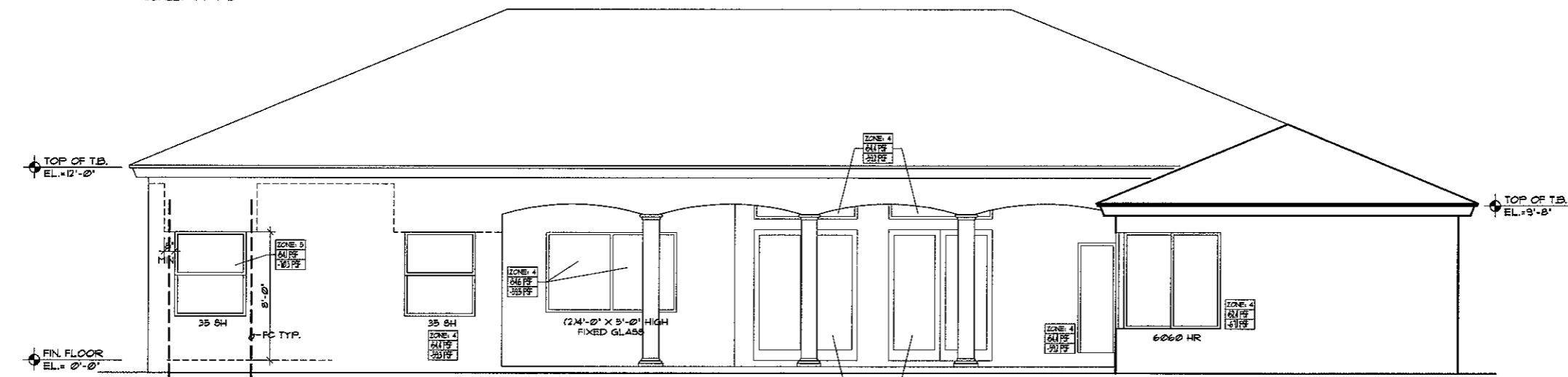
REVISIONS	BY

Date: 4-27-06  
Job: MODEL A  
Drawn: I.L.F.  
Checked: J.B.G.  
Scale: AS SHOWN

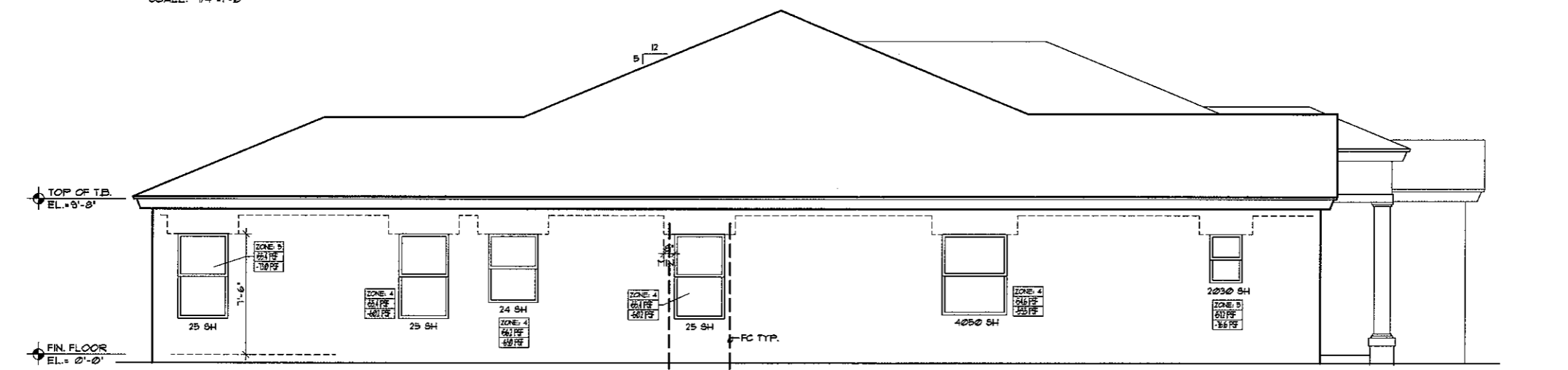
SHEET  
A-5  
OF



FRONT ELEVATION  
SCALE: 1/4"=1'-0"



REAR ELEVATION  
SCALE: 1/4"=1'-0"

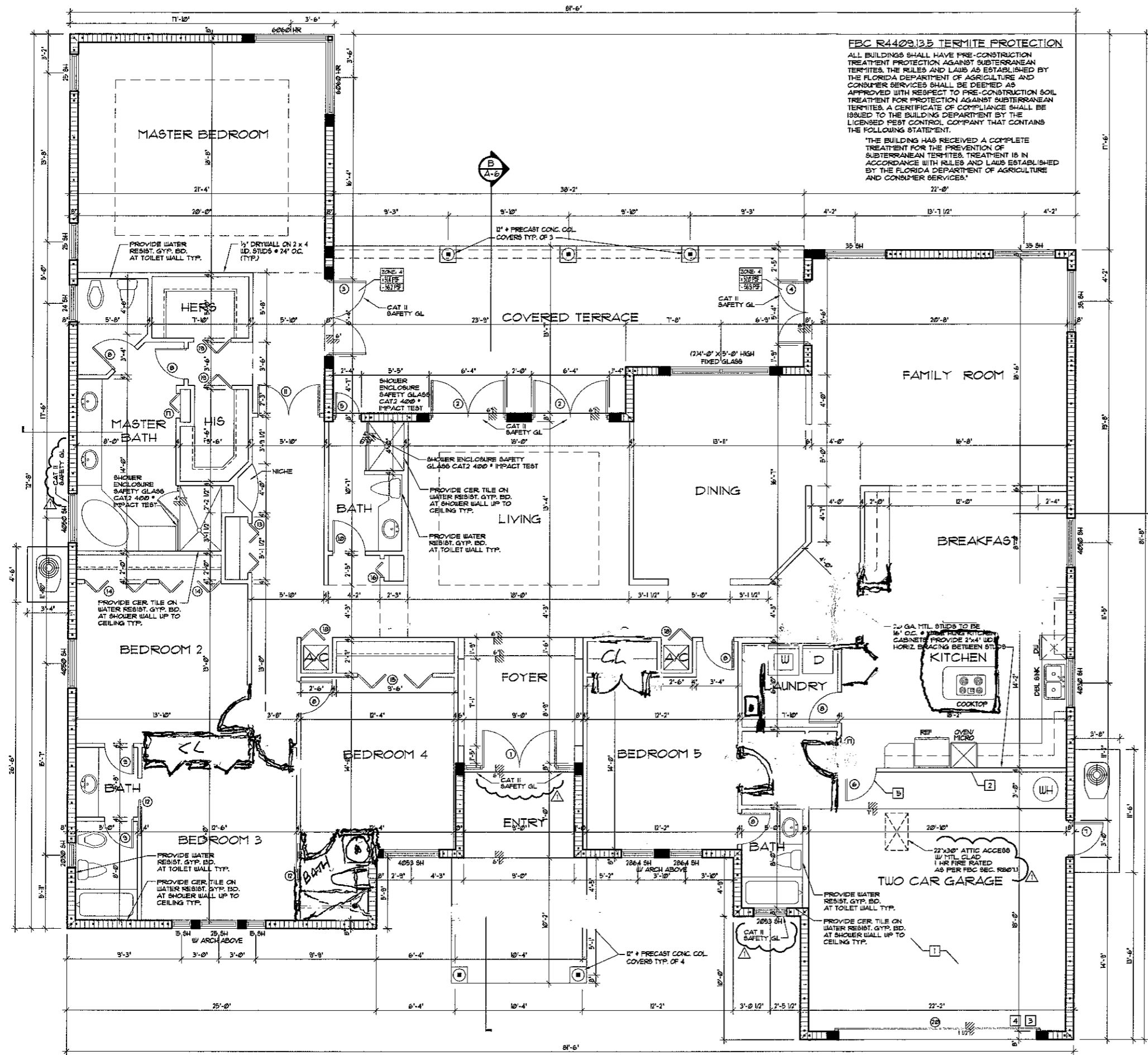


LEFT ELEVATION  
SCALE: 1/4"=1'-0"

12321 SW 94 AVE

5/5  
5010 S/P.

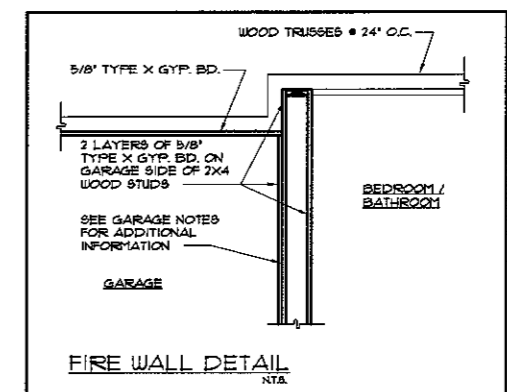




**SECOND MEANS OF ESCAPE WINDOWS**

EGRESS WINDOW AS SECOND MEANS OF ESCAPE TO HAVE AN OUTSIDE WINDOW OR DOOR OPERABLE FROM THE INSIDE WITHOUT THE USE OF TOOLS AND PROVIDING A CLEAR OPENING OF NOT LESS THAN 20 IN. IN WIDTH, 24 IN. IN HEIGHT AND 5.7 SQFT. IN AREA. FLORIDA BUILDING CODE SECTION R310.12.3.4

NOTE:  
EVERY CLOSET DOOR LATCH SHALL BE SUCH THAT CHILDREN CAN OPEN THE DOOR FROM INSIDE THE CLOSET.  
EVERY BATHROOM DOOR SHALL BE DESIGNED TO ALLOW OPENING FROM THE OUTSIDE DURING AN EMERGENCY WHEN LOCKED.  
NFPA 101 2000 EDITION



- GARAGE NOTES**
- PROVIDE 1 LAYER OF 5/8" TYPE "X" GYPSUM LATH ON 1x3" RAPPING STRIP #8" O.C. 3D CEMENT-COATED OR RING SHAKED NAILS 6" O.C. PAPER TAPE EMBEDDED IN CEMENTITIOUS COMPOUND OVER JOINTS AND EXPOSED NAILS HEADS COVERED WITH COMPOUND AND PRODUCT APPROVED INSULATION OF FIBERGLASS OR MINERAL WOOL BATA OR BLOW-IN FIBERGLASS/MINERAL WOOL OR CELLULOSIC INSULATION HAVING A MINIMUM INSULATION VALUE OF R-11 AS PER TABLE 31-C ITEM 21 S.F.C.
  - PROVIDE 1 LAYER OF 5/8" TYPE "X" GYPSUM BOARD APPLIED VERTICALLY OR HORIZONTALLY ON MTL STUDS. PROVIDE 3-1/2" BATT INSULATION WITHIN FRAME AS PER TABLE 31B-ITEM 18 S.F.C. SEE DETAIL ABOVE.
  - PROVIDE SIGN & GARAGE DOOR CHARGER. DO NOT OPERATE ENGINES WITH DOOR CLOSED. CARBON MONOXIDE EMISSION IS LETHAL. 1/2" MIN. LETTERS REQUIRED AS PER 1407.6 (6) S.F.C.
  - PROVIDE 2x6" FT. WOOD JAMBS BOLTED TO CONC. COLUMN WITH 1/2" DIA. x 6" ANCHOR BOLTS #4" O.C. FOR OVERHEAD DOOR RAIL. NOT MORE THAN 6" TOP & BOTTOM.
  - PROVIDE 600 SQIN. OF SCREENED BLOCK (OR IN GARAGE DOORS) VENTILATION FLUSH WITH GARAGE FINISH FLOOR (AS PER DADE COUNTY FLOOD PROGRAM).
  - RESIDENCE TO GARAGE DOOR TO BE PROVIDED WITH AUTO CLOSURE AND TO BE 1 HOUR FIRE RATED AS PER 1503.1 (3) S.F.C.
  - VENT DRYER THRU WALL TO OUTSIDE.

**AREA TABLE**

AC LIVING SPACE	3,910 S/F
COVERED TERRACE	452 S/F
GARAGE	413 S/F
ENTRY	175 S/F
<b>TOTAL AREA</b>	<b>5,010 S/F</b>

**ATTIC VENTILATION REQUIREMENTS:**

5,010 SF / 150 = 33.4 SF. REQUIRED  
#0.44 SF PER VENT  
358 LF. / 4' O.C. = 893 x 0.44 SF. = 394 SF. PROVIDED

5 BEP  
5-DATA



**J. Bonfill & Associates, Inc.**  
Registered Architects AA C002050  
9360 S.W. 72nd Street Suite 265  
Miami, Florida 33173 (305) 598-8383  
Jacqueline Bonfill Gee AR0013685

**OAKRIDGE NORTH  
MODEL A**  
Lot 19 Block 4 Miami, Florida  
Owner: Gilco Homes, Inc.  
Miami, FL (305) 598-9431

ALL DRAWINGS AND WRITTEN MATERIAL APPEARING HEREIN CONSTITUTE THE ORIGINAL AND UNPUBLISHED WORK OF J. BONFILL & ASSOCIATES, INC. AND MAY NOT BE DUPLICATED, USED OR DISCLOSED WITHOUT THE EXPRESS WRITTEN CONSENT OF J. BONFILL & ASSOCIATES, INC.

REVISIONS	BY
1-12-06	HF

Date: 4-27-06  
Job: MODEL A  
Drawn: H.F.  
Checked: J.B.G.  
Scale: AS SHOWN

SHEET  
**A-3**  
OF 8